

Pratt Industries Integrated Sustainable Supply Chain

RECYCLING

Closing the loop starts with our fully integrated recycling program focused on bailing, waste recovery and removal. You'll not only help the environment, but improve your bottom line. We currently offer waste recovery for paper, plastic, glass and metal.

1.8 Million tons of waste diverted from landfills each year



RETAIL DISTRIBUTION & DISPLAY FACILITIES

Going beyond the box, we also use our 100% recycled paper for, in-store displays, retail ready packaging products and 1,200 stock boxes available at PrattPlus.com

National distribution
High End Graphics
Design, produce & manage in-store POP displays & retail programs

All finished goods are rigorously tested in our ISTA certified lab.

CONVERTING

Following the supply chain - corrugated sheets are transferred to our 25 converting facilities.

Strategic geographic footprint provides regional and local customers with personalized, localized account representation & customer service.



Converting Capabilities: Die cutting, straight line, & auto-bottom.



Clean Energy

Pratt's environmental commitment extends beyond its pledge to produce 100% recycled paper and packaging. The first of four planned clean energy plants came online at our headquarters in Atlanta, Ga in 2009.

CLEAN ENERGY

EACH & EVERY DAY...

9 Megawatts of electricity are generated & 100% of steam needed to run our paper mill and corrugator is produced



250 Tons of greenhouse gas emissions are displaced



PAPER MILLS

Recovered waste paper is used by Pratt Industries' 3 modern, fast, and efficient 100% recycled paper mills.

3,000 Tons of 100% recycled paper produced daily



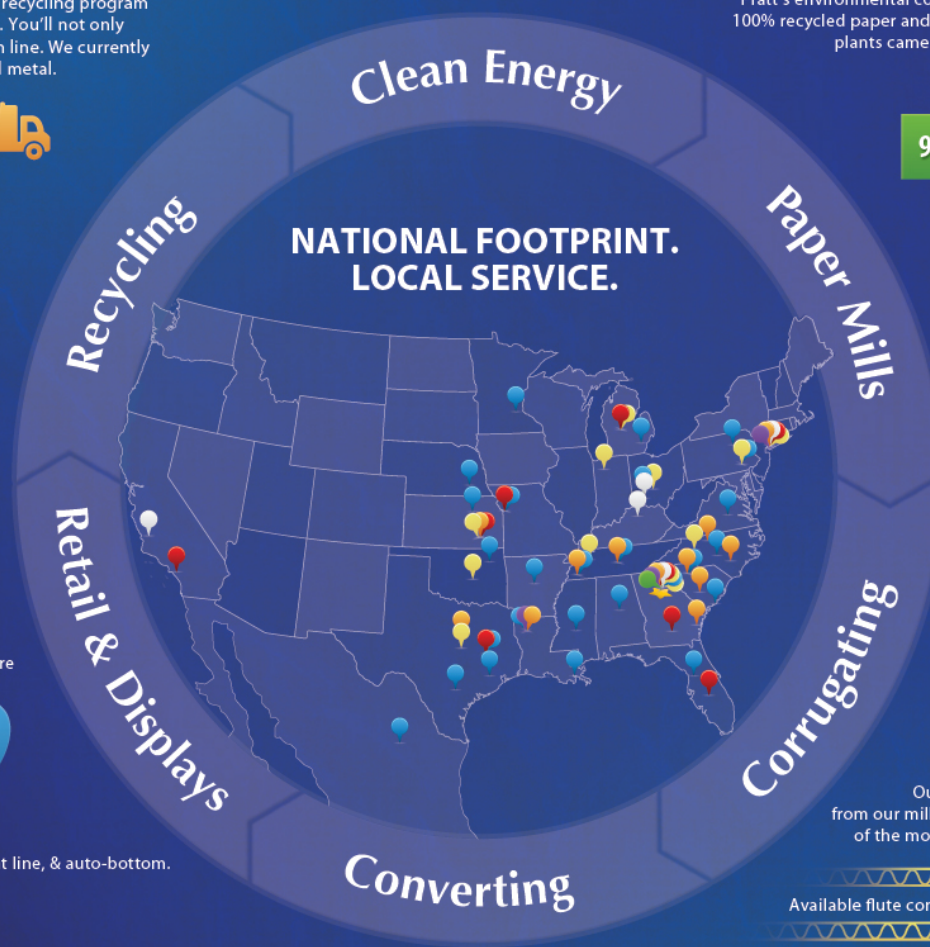
Enough paper to stretch from Atlanta to LA everyday.

CORRUGATING

Our logistics fleet transfers the 100% recycled paper from our mills to our corrugators. Our 12 corrugators are some of the most technologically advanced and largest in the US.

Available flute combinations: C, B, E, A, F, BC, EB, AA, AC, AAC

Our custom corrugated products include RSC and intricate rotary and flat bed die-cut items glued on state-of-the-art machinery.



NATIONAL FOOTPRINT.
LOCAL SERVICE.